

NOTE THE NEW DATE

SAILAWAY TO GREAT CAPTAIN'S ISLAND, GREENWICH, CT

June 30 –July 1

THIS IS A SAIL/DRIVE EVENT



Enjoy a day out at Great Captain's Island with its historic lighthouse, two beaches, birding sanctuaries, walking paths and picnic areas with BBQ grills. PLUS, there will be a skipper's barbecue at 1300 hrs. Please BYOB and bring an appetizer or side dish to share.

NOTE: THE FIRST FERRY TO THE ISLAND IS AT 1000 HRS; THE LAST FERRY OFF THE ISLAND RETURNING TO SHORE IS AT 1730 HRS

There is an anchorage and mooring field just to the north of the island and several mooring fields for those skippers wishing to stay overnight.

Great Captain's Island is part of the Town of Greenwich Park System. Because of this,

- **ALL PEOPLE GOING ON THE ISLAND WILL REQUIRE A PARK PASS!**
- Contact Gary Silberberg by email (GreenwichRealty@aol.com) to get the passes.
 - Those aged 64 and under, \$7; Those aged 65 and over, FREE
- **YOU MUST SIGN UP IN ADVANCE.** Park passes will be emailed to you. You **MUST** show this park pass to the park warden.
- **EVERYONE MUST REGISTER WITH GARY EVEN IF YOU HAVE A PASS!**
- **LAST DAY TO SIGN UP TO GET PARK PASSES: Thursday, June 28**

To sign up and obtain passes, contact Lead Skipper, Gary Silberberg, GreenwichRealty@aol.com

IF YOU HAVE ALREADY OBTAINED YOUR PARK PASS IT IS VALID FOR THE ENTIRE 2018 SEASON. NO NEED TO GET A NEW ONE FOR THIS EVENT.

BUT YOU STILL MUST REGISTER! REGISTER WITH GARY EVEN IF YOU HAVE A PARK PASS!

PLEASE SEE BELOW FOR DIRECTIONS AND OTHER IMPORTANT INFORMATION:

COMING BY CAR OR TRAIN: (SEE MAP ON LAST PAGE)

By Car: I-95 to Exit 3, Arch Street. Go south (toward the water) at the end of the ramp. Parking lot will be on your left. Park in the lot in spaces designated for Ferry parking. Day parking in the ferry lot is \$35. The ferry dock and ticket office is across the street to the left of the brick building.

By Train, Metro North to the Greenwich station. Walk 2 blocks south, toward the water. Ferry terminal is across the street to the left of the brick building.

Ferry tickets and schedule: The round trip ferry ticket CAN ONLY be purchased at the ferry dock. Those 64 years of age and under, the ferry fee is \$13. Those 65 and over the ferry fee is \$7. THIS IS IN ADDITION TO THE PARK PASS FEES. You may have to show your park pass at the ferry dock. **PARK PASSES ARE NOT AVAILABLE FOR PURCHASE AT THE FERRY DOCK, THE PARKS OR ON THE WEEKENDS. YOU MUST OBTAIN YOUR PARK PASS IN ADVANCE.** Be sure to contact Gary Silberberg (GreenwichRealty@aol.com) by email no later than Thursday, June 28th if you wish him to obtain a park pass for you.

IMPORTANT NOTE: WE WILL BE AT GREAT CAPTAIN'S ISLAND. NOT LITTLE CAPTAIN'S ISLAND. BE SURE TO TAKE THE CORRECT FERRY. THE CORRECT FERRY IS THE SMALLER VESSEL!

Due to tides, the ferry to Great Captain's Island runs on an intermittent schedule. Ferries out to the island leave on the hour and return on the half-hour. On June 30 the ferry **TO** the island runs from 1000 hrs to 1700 hrs. **Return ferries** run 30 minutes after the outbound ferry. **The last ferry off the island is at 1730 hrs (5:30 PM)**

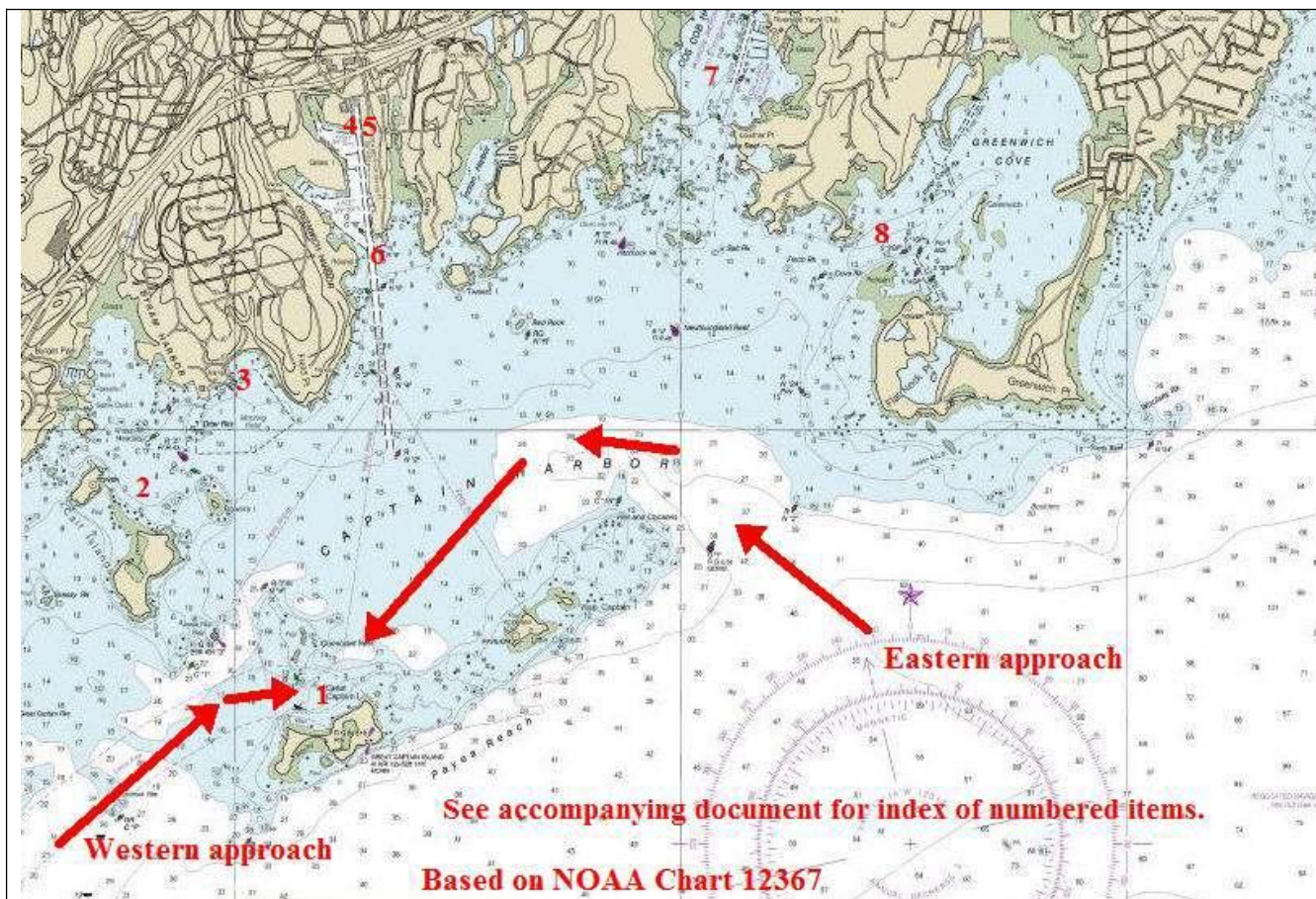
COMING BY PRIVATE VESSEL:

AGAIN, if you are going ashore, you **MUST** have a park pass, which must be obtained in **advance.** Be sure to contact Gary Silberberg (GreenwichRealty@aol.com) by email no later than Thursday, June 2^{8th} if you wish him to obtain a park pass for you.

YOU STILL MUST REGISTER WITH GARY EVEN IF YOU HAVE A PARK PASS!

There is an anchorage near Great Captain's Island from which boaters can access the island. While there are moorings near the island, these are private moorings and should not be taken without permission. **There is no dinghy dock on the island,** so you must beach your dink or swim ashore. Use of the ferry dock is allowed to drop off passengers and gear, but **NO TIE-UPS,** from @20 minutes before to 10 minutes after the hour, when the ferry is not using it. See chartlet below. (NOT for navigation)

For those staying overnight, there are several yacht clubs that recognize reciprocal privileges. See the list below. Additionally, there are anchorages nearby. Gary can help.



NOTE EASTERN AND WESTERN APPROACHES

Index to numbered items in the chart above

1. Great Captain's Island Anchorage
2. Byram mooring/anchorage area
3. Belle Haven Club*
4. Town ferry dock
5. Delamar Hotel
6. Indian Harbor Yacht Club*
7. Riverside Yacht Club*
8. Old Greenwich Yacht Club*

SEE DETAILED MAP BELOW

9. Metro North Train Station
10. Ferry Parking
11. Ferry Terminal
12. Greenwich Boat and Yacht Club

*Reciprocal privileges



SEE DETAILED MAP ON LEFT

- 9. Metro North Train Station
- 10. Ferry Parking
- 11. Ferry Terminal
- 12. Greenwich Boat and Yacht Club